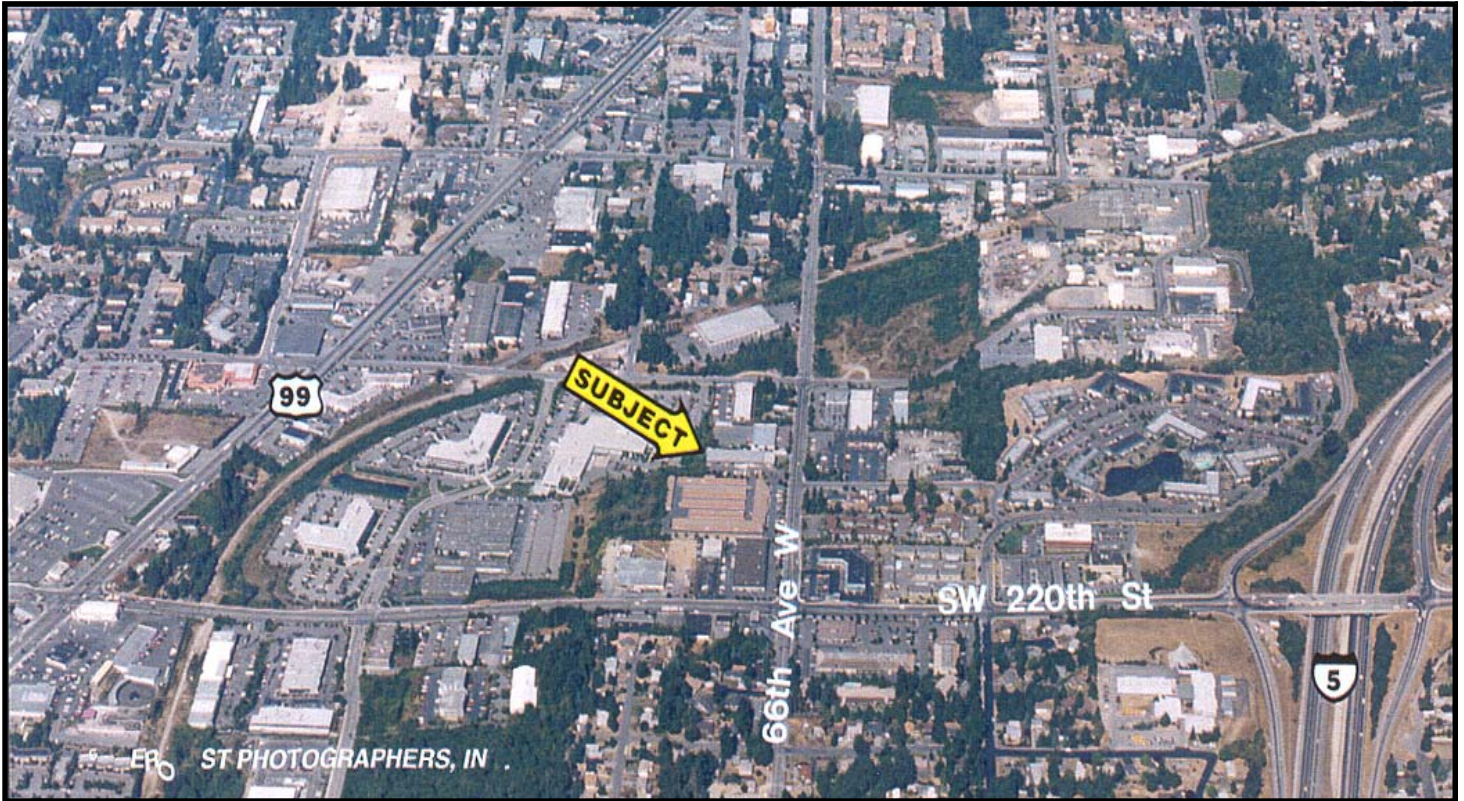


FOR LEASE

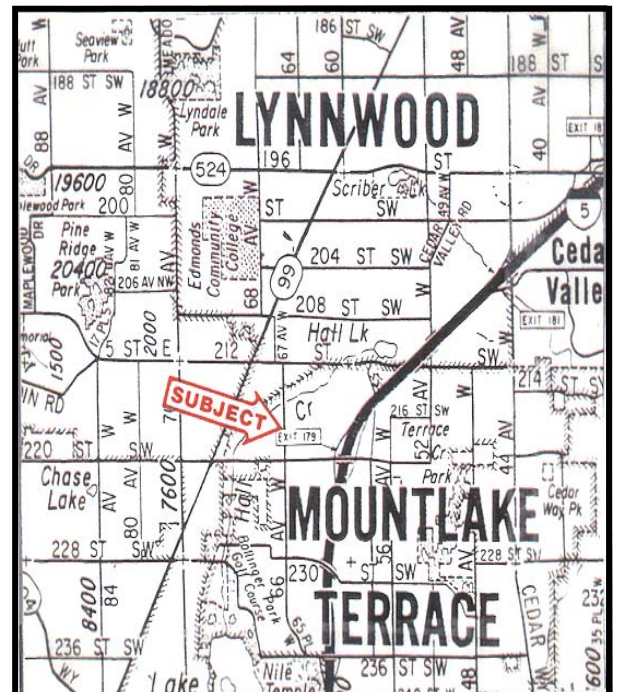
21718-66th Avenue West Mountlake Terrace, Washington



5,800 SF Warehouse/Office Space for LEASE

- Excellent for Automotive Shop/Manufacturing/Light Retail
- Available now
- Street exposure and signage
- 2 Services at 440-3 Phase 100 Amp.
- 18' Clear height
- 3 Oversized roll-up doors
- Incredible access
- **Rent:** \$3,800.00/mo. NNN (NNN Est. @ \$0.20 SF/mo.)

Three blocks off I-5 at 220th St. Exit – Mountlake Terrace



Brian S. Pounder
Regency Group, Inc.
11711 SE 8th St, #310
Bellevue, WA 98005
(425) 990-3463
bp@regencygroupinc.com